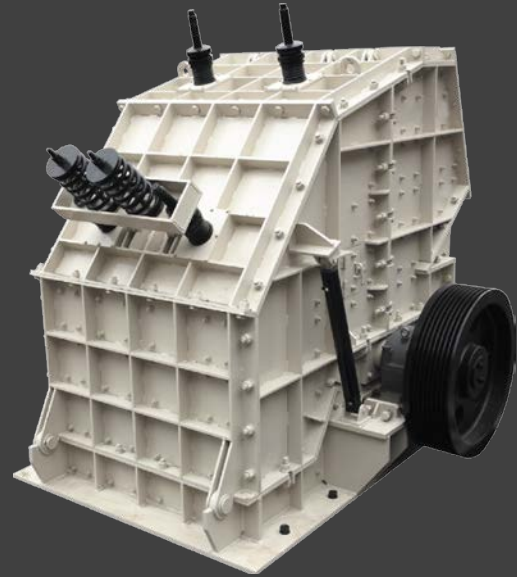


HORIZONTAL SHAFT IMPACTOR

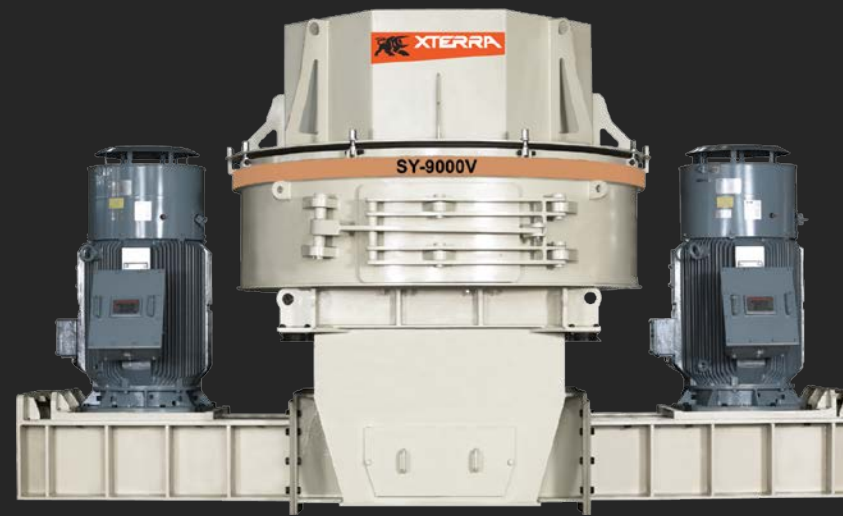


Model No.	Rotor Size(mm)	Capacity (t/h)				Motor (kw)
		Rotor Speed (m/s)				
		21 ~ 24	25 ~ 29	30 ~ 34	36 ~ 45	
XTHSI-1010H	Φ1050 × 1000W	60 ~ 71	63 ~ 70	56 ~ 62	51 ~ 57	55 ~ 75
XTHSI-1310H	Φ1350 × 1000W	123 ~ 133	115 ~ 125	103 ~ 114	95 ~ 105	75 ~ 110
XTHSI-1312H	Φ1350 × 1200W	153 ~ 168	143 ~ 157	128 ~ 142	115 ~ 129	95 ~ 130
XTHSI-1315H	Φ1350 × 1500W	183 ~ 202	170 ~ 189	153 ~ 169	134 ~ 153	110 ~ 130
XTHSI-1615H	Φ1600 × 1500W	260 ~ 285	240 ~ 265	217 ~ 240	195 ~ 220	150 ~ 175
XTHSI-1620H	Φ1600 × 2000W	340 ~ 370	315 ~ 350	283 ~ 315	250 ~ 280	190 ~ 220
XTHSI-2015H	Φ2000 × 1500W	410 ~ 450	380 ~ 415	345 ~ 380	315 ~ 345	220 ~ 250
XTHSI-2020H	Φ2000 × 2000W	540 ~ 590	500 ~ 550	460 ~ 500	420 ~ 460	300 ~ 400
XTHSI-3642H	Φ3600 × 4200W	44 ~ 52	36 ~ 42	30 ~ 35	25 ~ 28	110 ~ 130
XTFIC6-200	Φ1057 × 2120W	305 ~ 365	280 ~ 340	260 ~ 315	240 ~ 290	400 ~ 600
XTFIC6-300	Φ1150 × 3120W	470 ~ 565	430 ~ 520	400 ~ 480	370 ~ 445	600 ~ 800

(Capacities are based upon ordinary limestone not containing wet fine particles.)

1. High capacity and variable crushing ratio.
2. Cubical final product with cracks due to selective crushing.
3. Robust construction for minimum maintenance
4. Minimum stock of wearing parts by mostly use of same parts in main wearing zone.
5. Wearing parts easily replaceable for great accessibility.

VERTICAL SHAFT IMPACTOR



1. Designed with sound structure, low noise and low vibration.
2. Adjustable rotor speed to obtain desired crush ratio and desired production volume.

Model No.	Capacity(t/h)		
	XTVSI-9000V		
Drive Config.	Dual		
Motor(kw)	190×2	220×2	300×2
Crushing	265~630	310~730	420~780
Shaping	265~630	310~730	420~780
Sand & Fine C/R	265~550	310~650	420~680

Description	Model No.	XTVSI-9000V	
		Dead Stock	Anvil
Rotor Dia .(mm)		900	
Rotor Speed (m/sec)		45 ~ 65	
Rotor (rpm)		1000 ~ 1800	
Driving Method		V-BELT	
Max. Feed Size(mm)		25x55x70	
Purpose		(Shaping)	(Crushing)

1. (The above capability is applied in case the aggregates, as a specific gravity of 1.6, are supplied consistently.)
2. (The treatment capability depends on the moist and injection material.)

HAMMER MILL

RING HAMMER CRUSHER

Model No.	Capacity (t/h)	Motor (kw)	Rotor Dim. (mm)
XTHM-610R	180 ~ 250	110	Φ660 × 1080W
XTHM-912R	340 ~ 400	260	Φ906 × 1233W
XTHM-915R	550 ~ 600	260	Φ915 × 1470W
XTHM-1120R	800 ~ 1000	375	Φ1120 × 2000W

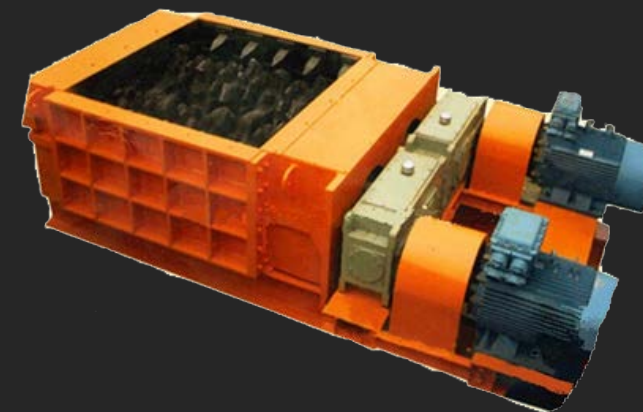


REVERSIBLE IMPACT CRUSHER

Model No.	Capacity (t/h)	Motor (kw)	R.P.M
XTRSI-30	55 ~ 85	55 ~ 150	1000 ~ 1500
XTRSI-36	150 ~ 283	75 ~ 500	900 ~ 1200
XTRSI-42	210 ~ 396	150 ~ 600	600 ~ 900
XTRSI-48	360 ~ 680	220 ~ 1100	600 ~ 900
XTRSI-60	500 ~ 944	300 ~ 1200	500 ~ 720

Hammer crushers are highly efficient in crushing brittle materials such as coal, gangue, slag, sandstone, shale and limestone. Easy to operate with high production efficiency and low noise and vibration.

SIZER CRUSHER



SIZER CRUSHER

Model No.	Capacity (t/h)	Motor (kw)	Rotor Dim. (mm)
XTSC-24	150 ~ 200	110KWx2	Φ600
XTSC-32	200 ~ 300	132KW x2	Φ800
XTSC-36	300~ 500	220KW x 2	Φ900
XTSC-40	500 ~ 700	300KW x 2	Φ1000